

Art Portfolio Trent Altman

United Nations Award Winning Artist

www.trentsstudio.com

trentsstudio@aol.com

502.417.6063

Contents

	Page
I. Twenty-Five Paintings: Expressionistic, Abstract Art. Acrylic and Selected Paintings Have Very Original Mixed Media	3-28
II. Professional Art Critiques	29
III. Commercial development projects.	30
IV. Commissioned Works	31
V. Kentucky Education Television, KET, short film nominated for an Emmy: <i>Art for Expression</i> , produced by Valerie Trimble.	32
VI. Permanent Collections	33
VI. Bio	34
VII. Curriculum Vitae: Honors, International Awards, Gallery Representation, and Exhibitions	35-44

I. Twenty-Five Paintings:

**Expressionistic, Abstract Art
Acrylic and Selected Paintings With Very
Original Mixed Media**



Breath of God, 48x60 *Altman's work is strong on the physical texture of paint and objects by conforming them to his world. Indeed, a match, as well as, a new approach to the combined worlds of artists styles, like the impressionists : Monet's broken color, Pissarro's pattern of broken color, and Van Gogh's impasto. Yvonne Mikulencak, M.F.A., retired art history professor, and art studio.*



An Abstract Garden II, 24x36, Award Winning Image--Chosen by United Nations.

“His [Altman’s] style is based on the form of Watteau, in a combined style of impasto impressionism, synthetic cubism, and color contrast for energetic communication of focal points. The energy impact of all three styles as non objective art captured Oscar Wilde’s “Nature copying Art.” (Preface of Dorian Grey), and transfixes and comforts the viewers, through their language with nature, into an imaginative and innovative world of the gods by art.” Yvonne Mikulencak, M.F.A, retired art history professor, and art studio.



A Seaside View, 54x56 *"Altman's work is strong on the physical texture of paint and objects conforming them to his world. Altman's images are transformed into the patterns of Cubism and High Analytical Cubism of Picasso and George Braque."*
Yvonne Mikulencak, M.F.A. retired art history professor, and art studio.



Octa-Fish, 30x40 “***Altman's work is strong on the physical texture of paint and objects conforming them to his world. Altman's images are transformed into the patterns of Cubism and High Analytical Cubism of Picasso and George Braque.***”
Yvonne Mikulencak, M.F.A. retired art history professor, and art studio.



A Rocky Beach Shore, 32x22 ***"Trent's expressionistic style and career history have proven him to be not only a very credible but a well respected artist. In the style of abstract expressionism his paintings are quite captivating." Sonia Sugavau (Documentary Filmmaker writer, director, videographer, editor, TV Host and reporter.)***



An Abstract: Colorful Meadow and Sky, 36x44 ***“Altman’s aesthetics has joined this group [Picasso, Braque, and Wattea] of visual and literary artists, on a strong plain on the Isle of Cythera, as your visual guide of human emotions, dancing to the universal rhythms of nature on another dimension.” Yvonne Mikulencak, M.F.A. retired art history professor, and art studio.***



Jewels at Red Rock, 26x24 --"***Altman's work is strong on the physical texture of paint and objects conforming them to his world. He offers a new approach to the combined worlds of artists' styles: Monet's broken color, Pissarro's pattern of broken color and Van Gogh's impasto.***" Yvonne Mikulencak, M.F.A. retired art history professor, and art studio.



An Abstract Tree at Night, 24x36 ***“Altman's work is strong on the physical texture of paint and objects conforming them to his world. Altman's images are transformed into the patterns of Cubism and High Analytical Cubism of Picasso and George Braque.” Yvonne Mikulencak, M.F.A. retired art history professor, and art studio.***



A Field of Dreams, 46x24, “*The viewer is taken on a tour, of a new metaphysical world, with the comfort of timelessness, and patterns from objects of nature, working together. It is a calm world transformed by metaphysical beauty and created by poets such as John Donne and George Herbert.*” Yvonne Mikulencak, M.F.A. retired art history professor, and art studio.



An Abstract Garden at Twilight, 36x36, ***"The texture is also captivating with his use of mixed media. I feel like I'm entering Trent's soul each time I immerse myself in one of his works." Sonia Sugavau (Documentary Filmmaker, writer, director, videographer, editor, TV Host and reporter.)***



A Golden Horse, 12x12, ***“Altman’s images are transformed into patterns of Cubism and High Analytical Cubism of Picasso and George Braque, translating the imaginative form of Watteau’s metaphysical world. He has combined what many artists, in the past, used on a singular basis.” Yvonne Mikulencak, M.F.A. retired art history professor, and art studio.***



An Abstract Seashell Beach, 36x36, "***Altman's work is strong on the physical texture of paint and objects conforming them to his world. Altman's images are transformed into the patterns of Cubism and High Analytical Cubism of Picasso and George Braque. He offers a new approach to the combined worlds of artists' styles: Monet's broken color, Pissarro's pattern of broken color and Van Gogh's impasto.***" Yvonne Mikulencak, M.F.A. retired art history professor, and art studio.



An Abstract Golden Tree, 14 x 28, ***“Altman’s images are transformed into patterns of Cubism and High Analytical Cubism of Picasso and George Braque, translating the imaginative form of Watteau’s metaphysical world. He has combined what many artists, in the past, used on a singular basis.”***
Yvonne Mikulencak, M.F.A. retired art history professor, and art studio.



Mystery Under the Sea, “*His [Altman’s] style is based on the form of Watteau, in a combined style of impasto impressionism, synthetic cubism, and color contrast for energetic communication of focal points.]The energy impact of all three styles as non objective art captured Oscar Wilde’s “Nature copying Art.” (Preface of Dorian Grey), and transfixes and comforts the viewers, through their language with nature, into an imaginative and innovative world of the gods by art.*” Yvonne Mikulencak, M.F.A. retired art history professor, and art studio.



A Seaside Whimsy, 28x28, ***"Trent Altman's paintings are confident and original. Impressive work." Nicholas Treadwell (owner Treadwell Gallery, Aigen, Austria).***



An Abstract Seascape, 36x24, ***“The viewer is taken on a tour, of a new metaphysical world, with the comfort of timelessness, and patterns from objects of nature, working together. It is a calm world transformed by metaphysical beauty and created by poets such as John Donne and George Herbert.”*** Yvonne Mikulencak, M.F.A. retired art history professor, and art studio.



Beauty and Calm: My Masterpiece, 30x40~ ***“Altman’s work is strong on the physical texture of paint and objects by conforming them to his world. Indeed, a match, as well as, a new approach to the combined worlds of artists styles, like the impressionists : Monet’s broken color, Pissarro’s pattern of broken color, and Van Gogh’s impasto.” Yvonne Mikulencak, M.F.A., retired art history professor, and art studio.***



Passionate, 40x30, "Trent's expressionistic style and career history have proven him to be not only a very credible but a well respected artist. In the style of abstract expressionism his paintings are quite captivating." Sonia Sugavau (Documentary Filmmaker writer, director, videographer, editor, TV Host and reporter.)



Colors in My World, 30x40~ ***“His [Altman’s] style is based on the form of Watteau, in a combined style of impasto impressionism, synthetic cubism, and color contrast for energetic communication of focal points. The energy impact of all three styles as non objective art captured Oscar Wilde’s “Nature copying Art.” (Preface of Dorian Grey), and transfixes and comforts the viewers, through their language with nature, into an imaginative and innovative world of the gods by art.” Yvonne Mikulencak, M.F.A., retired art history professor, and art studio.***



A Seaside Landscape, 32x22 ~ ***“Altman’s work is strong on the physical texture of paint and objects by conforming them to his world. Indeed, a match, as well as, a new approach to the combined worlds of artists styles, like the impressionists : Monet’s broken color, Pissarro’s pattern of broken color, and Van Gogh’s impasto.” Yvonne Mikulencak, M.F.A. retired art history professor, and art studio.***



Feeling Calm, 36x40, ***“Altman’s aesthetics has joined this group [Picasso, Braque, and Watteau] of visual and literary artists, on a strong plain on the Isle of Cythera, as your visual guide of human emotions, dancing to the universal rhythms of nature on another dimension.” Yvonne Mikulencak, M.F.A., retired art history professor, and art studio.***



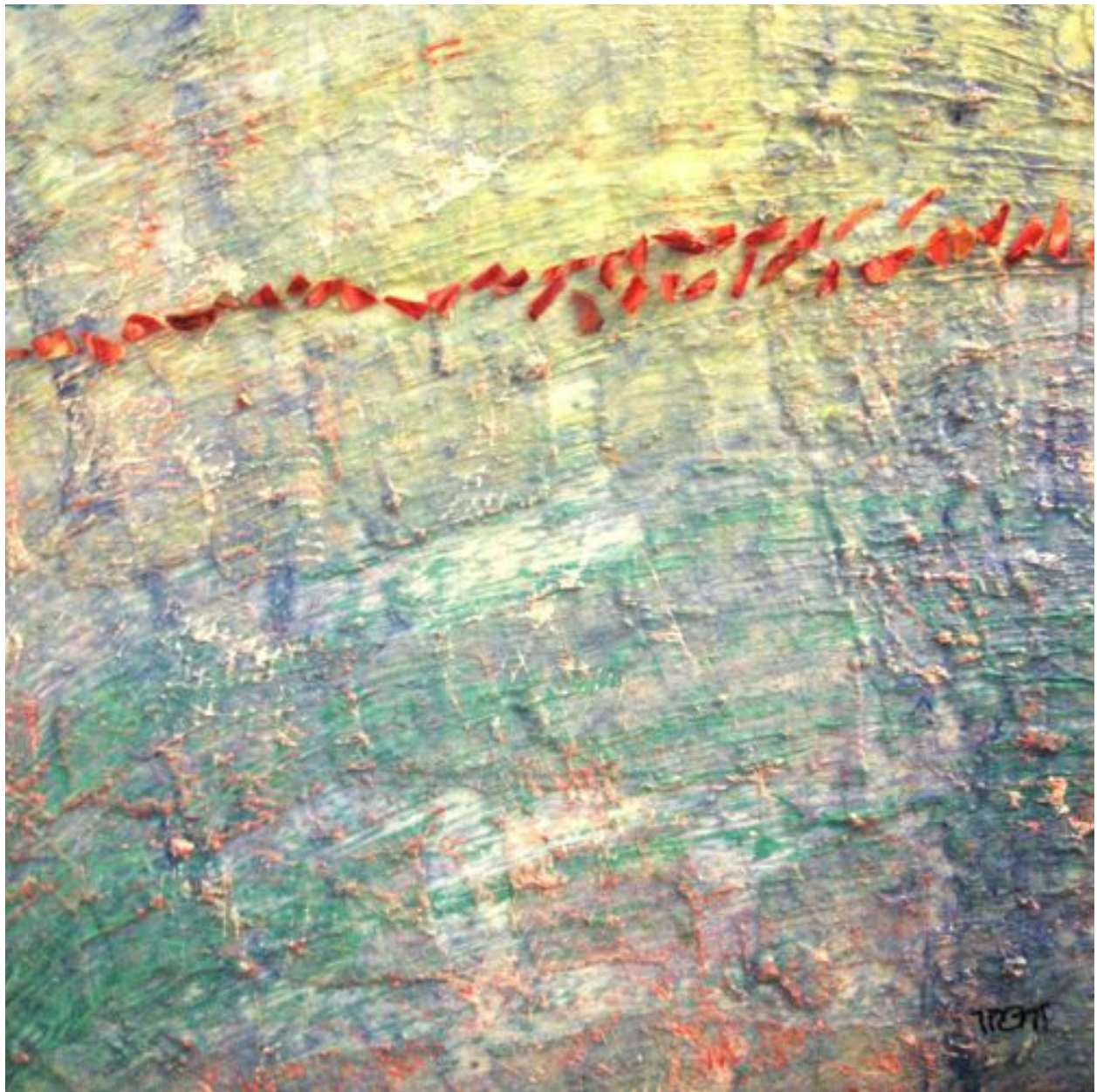
A Sunny Garden, 30x40, “**Altman's work is strong on the physical texture of paint and objects conforming them to his world. Altman's images are transformed into the patterns of Cubism and High Analytical Cubism of Picasso and George Braque. He offers a new approach to the combined worlds of artists' styles: Monet's broken color, Pissarro's pattern of broken color and Van Gogh's impasto.**” Yvonne Mikulencak, M.F.A., retired art history professor, and art studio.



Siesta Key Sunset, 24x24 ~ ***“Altman's work is strong on the physical texture of paint and objects conforming them to his world. He offers a new approach to the combined worlds of artists' styles: Monet's broken color, Pissarro's pattern of broken color and Van Gogh's impasto”. Yvonne Mikulencak, M.F.A., retired art history professor, and art studio.***



Summer Shade, 24x24, ***“The texture is also captivating with his use of mixed media. I feel like I'm entering Trent's soul each time I immerse myself in one of his works.” Sonia Sugavau (Documentary Filmmaker writer, director, videographer, editor, TV Host and reporter.)***



Sunlight in Blue Sky, 30x30, ***“Altman's work is strong on the physical texture of paint and objects conforming them to his world. He offers a new approach to the combined worlds of artists' styles: Monet's broken color, Pissarro's pattern of broken color and Van Gogh's impasto.” Yvonne Mikulencak, M.F.A., retired art history professor, and art studio.***

II. PROFESSIONAL ART CRITIQUES



Trent Altman does not re-enact "The Embarkation for Cythera" by Jean-Antoine Watteau , but guides the viewer further through the Isle of gods, via his paintings. His style is based on the form of Watteau, in a combined style of impasto impressionism, synthetic cubism, and color contrast for energetic communication of focal points. The energy impact of all three styles as non objective art captured Oscar Wilde's "Nature copying Art." (Preface of Dorian Grey), and transfixes and comforts the viewers, through their language with nature, into an imaginative and innovative world of the gods by art.

Altman's work is strong on the physical texture of paint and objects by conforming them to his world. Indeed, a match, as well as, a new approach to the combined worlds of artists styles, like the impressionists : Monet's broken color, Pissarro's pattern of broken color, and Van Gogh's impasto. Altman's images are transformed into patterns of Cubism and High Analytical Cubism of Picasso and George Braque, translating the imaginative form of Watteau's metaphysical world. He has combined what many artists, in the past, used on a singular basis.

The viewer is taken on a tour, of a new metaphysical world, with the comfort of timelessness, and patterns from objects of nature, working together. It is a calm world transformed by metaphysical beauty and created by poets such as John Donne and George Herbert. Altman's aesthetics has joined this group of visual and literary artists, on a strong plain on the Isle of Cythera, as your visual guide of human emotions, dancing to the universal rhythms of nature on another dimension. Altman's aesthetics has join this group of visual and literary artists, on a strong plain on the Isle of Cythera, as your visual guide of human emotions, dancing to the universal rhythms of nature on another dimension.

~ **Yvonne Mikulencak, M.F.A**

Retired Art History Professor and Art Studio

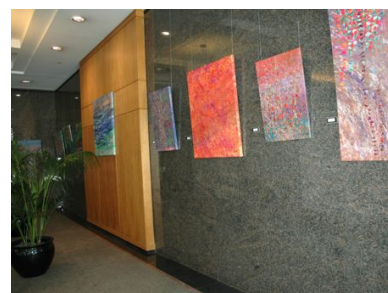
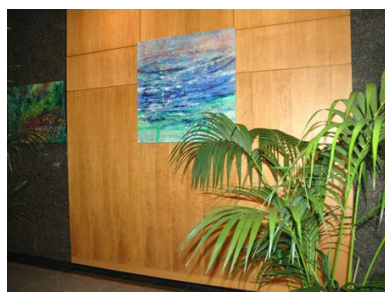
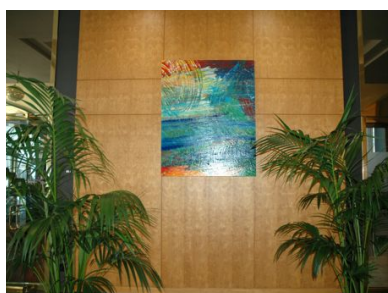


"Trent's expressionistic style and career history have proven him to be not only a very credible but a well respected artist. In the style of abstract expressionism his paintings are quite captivating. His play with colours and shapes makes you linger, makes you wonder. The texture is also captivating with his use of mixed media. I feel like I'm entering Trent's soul each time I immerse myself in one of his works." **Sonia Sugavau (Documentary Filmmaker writer, director, videographer, editor, TV Host and reporter.)**



"Trent Altman's paintings are confident and original. Impressive work." **Nicholas Treadwell (owner Treadwell Gallery, Aigen, Austria).**

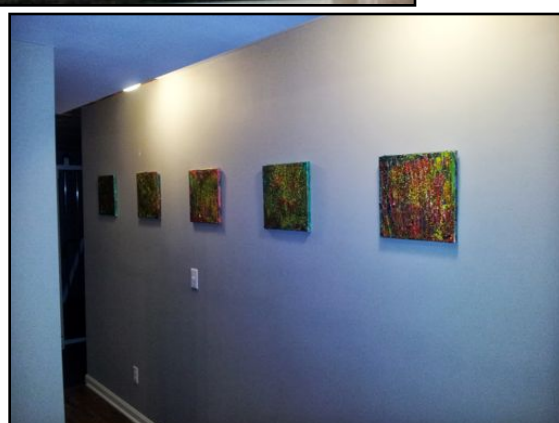
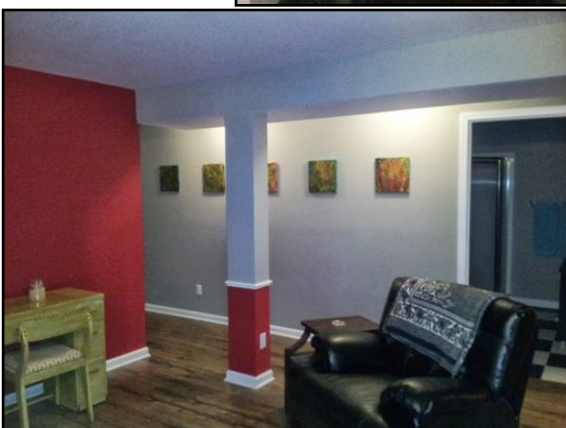
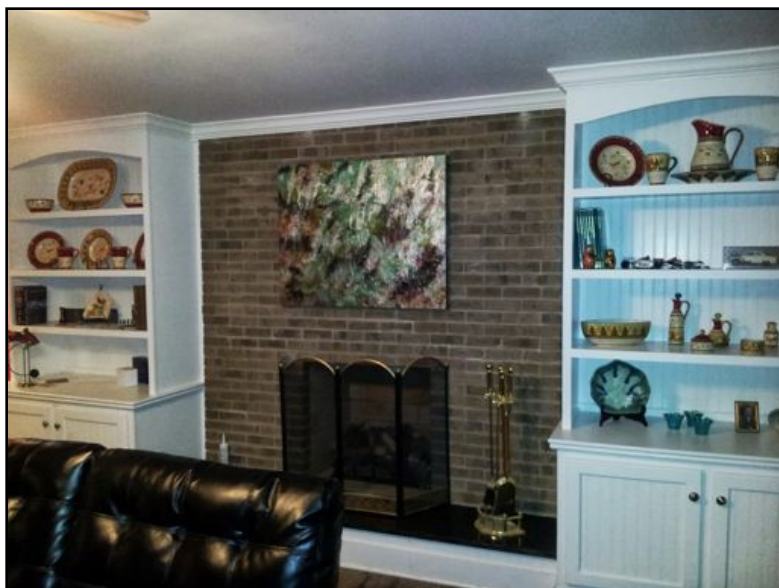
III. COMMERCIAL DEVELOPMENT PROJECTS: THE MEIDINGER TOWER, LOUISVILLE, KY



***See CV for Altman's additional commercial exhibitions**

IV.

COMMISSIONED WORKS by ALTMAN for Collector



V. Short Film Produced

by



**Kentucky Education Television
on Altman's Art Making 'Art for Expression'**

Nominated for an Emmy, May 2014



http://www.ket.org/cgi-bin/cheetah/watch_video.pl?nola=kkyli+001808

Kentucky Life

(#1808) Lucille Sharp/Crittenden-Our Town/Northern Kentucky Fort Towns/Trent Altman

Meet Lucille Sharp, an actress from Lexington who has a role in this season's Downton Abbey; the Grant County community of Crittenden is Our Town; learn how the Fort-named towns of Northern Kentucky got their names; and the award-winning and inspiring work of Louisville artist Trent Altman. A 2013 KET production hosted by Dave Shuffet.

VI. Permanent Collections



Lucille Caudill Little
Fine Arts Library,
University of KY



St Peters Church in Paris KY



Cassis Dermatology



Village Green Hills, Luxury Homes



McCarton Foundation

ALTMAN'S BIO



Trent Altman of Louisville, KY has been a professional artist for 13 years. Altman started painting at the age of 24 (in 2001). After exploring his interests, painting became his most enjoyable activity. A University of Louisville art student and now friend, Teresa Adamchik provided art sessions for his enjoyment. After six months, he began producing some very unique artistic paintings and he was accepted into the Kentucky Arts Council. Altman's painting skills have evolved over the past 13 years and so has his awards, most notably, the United Nations, 2012, honors, and a 2013 KET documentary on his

art-making was nominated for an EMMY and numerous international awards and exhibition. Altman won the visual artist award out of 17 countries and is the Ambassador for 2013 International Natural People's Awards and Festival exhibitions. Altman has gallery representation in Naples, FL., Nashville, TN, Gibsons, BC, and Louisville, KY

Altman paints expressionistic abstract art using acrylics, very original mixed media, and mediums on canvas. His work displays an emphasis and commitment to the PROCESS of art making. Experiencing his work makes that abundantly clear. One can sense a freedom of expression, movement, energy and drive through the multiple methods of applying paint and collage materials. With each piece he discovers, explores and ultimately shares layers and avenues of moods and emotions. When weather permits, Altman loves painting outdoors. His favorite place to be and to paint is on the beach. He travels to Siesta Key Fl., several times a year. The viewer senses his uplifting and joyful self expression through his interpretation of nature.

Altman creates his own small universe within a world of chaos and uncertainty. "Altman's work is strong on the physical texture of paint and objects by conforming them to his world. Indeed, a match, as well as, a new approach to the combined worlds of artists styles, like the impressionists : Monet's broken color, Pissarro's pattern of broken color, and Van Gogh's impasto. Altman's images are transformed into patterns of Cubism and High Analytical Cubism of Picasso and George Braque, translating the imaginative form of Watteau's metaphysical world. He has combined what many artists, in the past, used on a singular basis."

~ Yvonne Mikulencak, M.F.A, Art History Professor and Art Studio

Contact: www.trentsstudio.com

VII. Curriculum Vitae: Honors, International Awards, Gallery Representation, and Exhibitions

1. Overview: Artist Highlights and Art Honors, 2003-2014

2. Honors and Awards

3. Professional Art Critiques (gallery owner, documentary filmmaker, and art history professor)

4. Publications: Articles About Altman's Art Making and Altman's ArtWork

5. Permanent Exhibitions and Collectors

6. Solo Art Shows (2003- present)

7. Group Art Shows (2003 - present)

8. Juried Fine Art Fairs (2003 - present)

9. Collaborative Art Projects with Musician Michael Fess and Other You Tube Video

10. Galleries

11. Other Exhibits

1. Overview: Artist Highlights and Art Honors, 2003-2014

2014- ART FOR COMMERCIAL APPEAL-- Gallery One in Nashville has purchased Trent's oversized paintings for display in the lobby of a new upscale development. They have interest in Altman's paintings for newly constructed or renovated office space and buildings in Nashville.

2014 - ART FOR COMMERCIAL APPEAL --Altman's art in the Meitinger Tower on lobby marble walls. Fourth Street, In Louisville, KY.

2013 Kentucky Education Television (KET), Nominated for an Emmy, Valerie Trimble produced documentary, *An Art for Expression*, about Trent Altman's art making, 2013. ([#1808](#)) [Lucille Sharp/Crittenden-Our Town/Northern Kentucky Fort Towns/Trent Altman](#)

2013 ANCA'S INTERNATIONALLY NATURAL PEOPLE'S (INAP) AWARDS, for visual arts category. Altman was chosen as the global artist out of 17 countries. Award ceremony British Columbia, October 4, 2013. Trent has been asked and has accepted to be the Ambassador representing his town, his state, and his country for the INAP awards and festival.

2013- SPACE OPERA SOCIETY, will use Trent's art in nearly all of their sci-fy productions, series and movies in Hollywood.

2012 UNITED NATIONS AWARD WINNING ARTIST of THE AUTISM AWARENESS STAMP. Altman's image *Abstract Garden II* was chosen for a stamp. He was one of two artists chosen from the U.S and one of eight chosen around the globe. A series of postage stamps were launched in honor of World Autism Awareness Day.

1. Overview: Artist Highlights and Art Honors, 2003-2014, cont.

U.N. Postal Administration, printed 1 million of the stamps to be sold at the United Nations: New York, Geneva, and Vienna.

2012 Altman with other artists were honored at a ceremony held at the UN Headquarters in New York. The UN Secretary- General Ban Ki-Moon dedicated the Autism Awareness stamps for World Autism Awareness Day at the Autism Speaks Panel discussion.

2012 Honoree of the McCarton Foundation NYC Event & exhibitor in group show with world re-known artist Steven Wiltshire at the Edison Ballroom.

2012-present World Re-known Artist Wyland--Trent and Wyland are artist friends. Wyland has one of Trent Altman's paintings. "Your artwork is very inspiring and I am proud of you." Good luck in your effort to get you art featured in galleries across the US." Wyland.

2012- Strokes of Genius Group Art Show- United Nations Building, April 1, 2012.

2013- Art exhibited and sold at Good Purpose Gallery in the Berkshires, Lee, Massachusetts.

2010-present--Altman has numerous collectors in the U.S. and around the world, Canada, UK, Japan, and Malaysia.

2. Honors and Awards

2013. Nominated for an EMMY (SHORT FILM) Kentucky Educational Television (KET), *An Art for Expression*, aired a segment on January 26 on Louisville Life, Kentucky Educational Television. [\(#1808\) Lucille Sharp/ Crittenden-Our Town/Northern Kentucky Fort Towns/Trent Altman](#)

2013 ANCA'S INTERNATIONALLY NATURAL PEOPLE'S (INAP) AWARDS, for visual arts category. Trent was chosen as the global artist out of 17 countries. Award ceremony British Columbia, October 4, 2013. Altman accepted the role as Ambassador representing his town, his state, and his country for the INAP awards and festival.

2012 UNITED NATIONS AWARD WINNING ARTIST of THE AUTISM AWARENESS STAMP. Altman's image *Abstract Garden II* was chosen for a stamp. He was one of two artists chosen from the U.S. A series of postage stamps were launched in honor of World Autism Awareness Day. U.N. Postal Administration, printed 1 million of the stamps.

2012 Altman with other artists were honored at a ceremony held at the UN Headquarters in New York. The UN Secretary- General Ban Ki-Moon dedicated the Autism Awareness stamps for World Autism Awareness Day at the Autism Speaks Panel discussion.

2012 Honoree of the McCarton Foundation NYC Genius Event & Art Exhibit at the Edison Ballroom with world re-known artist Steven Wiltshire.

2012- Strokes of Genius Group Art Show- United Nations Building, April 1, 2012.

2012-present. Friends with world re-known marine life artist Wyland. Wyland owns a canvas original of Trent Altman's art and recommends Trent as an accomplished artist.

2012 WHAS TV in Louisville, KY- produced a video segment about Trent Altman and his painting. *Gifted Louisville man uses art to express himself.* <http://independencebound.com/trentscart/photos>

2. Honors and Awards, cont.

2011. Annual Louisville Visual Arts Association Art Auction November 12, Trent sold, Cascades Over Rock, 60×40.

2011—University of Louisville Autism Center at Kosair Charities purchased 15 pieces of artwork for display throughout the new center.

2011—Goodwill Industries of Ky. Commissioned image 'Joy and Laughter' printed 1400 on birthday card for employees, vendors, and board members across Kentucky.

2010- Received the Derby Award, – 'Imagine', First Lady's Office Exhibition, May – November 2010- Kentucky Arts Council Purchased the Art Work.

2009, Received Award Grant for \$500.00 from Kentucky Arts Council for project on large canvases, June.

2010— Long Island Conference. Commissioned Image of 'Life Love Explosion' printed on front cover of book information. April

2009— Ridgewood Baptist Church, new logo, 'Good Morning God' art work on large outside banner, outside sign and stationary.

2008-2009—Crisis and Prevention Institute (CPI), an international company, logo, 'Life, Love, Explosion' art work on poster and brochures.

2008 Received Honorable Mention: Crocker Park Juried Art Show, Cleveland OH, June. Received an invitation to 2009 Crocker Park.

2007 Designer Showcase Exhibit, 'The Vision' (painting) at the Kentucky Crafted: The Market, Kentucky Fair and Expo Center, Louisville, KY, South Wing, March, 1 – 4.

2007. Front cover book Artwork, 'The Path', in Becoming Remarkably Able: Walking the Path to Talents, Interests, and Personal Growth. Published by Autism Aspergers Publishing Co., 2007. Author: Jackie M. Marquette, Ph.D.

2006. Front cover book artwork, 'The Vision', The Capability and Independence Scale (CAIS) Published by the Marquette Group, 2007. Author: Jackie M. Marquette, Ph.D.

2006-2007 Presbyterian Church (U.S.A.), Artwork to use 4 images, 12,000 booklets printed. One of Altman's images used r each quarter on cover of The Present Word Adult Bible Study, Presbyterian Church (U.S.A.), Congregation Ministry Publishing Co., four quarterly issues.

2006-Received Honorable Mention: Chatauqua Juried Art Show, Madison, IN September.

2006 -Kentucky Speech and Hearing Association (KSHA). Commissioned the art image, 'Soaring Above Challenges', as logo and the convention theme, February.

2005. The Rhythmic Arts Project, CD album, included Altman's art work in album cover, Fall 2005. Gifted Artists Records, Carpinteria, CA founded by Eddie Tuduri.

2005. Accepted as a Kentucky Juried Visual Artist, 2005, Kentucky Arts Council

2004. Artopia Art Exhibit, Louisville, KY, received 'Honorable Mention' for "The Beach". Group show

2. Honors and Awards, cont.

Autism Asperger's Digest, Nov/Dec., back cover art exhibit, 2003.

3. Professional Art Critiques about Altman's Art

"Trent Altman does not re-enact 'The Embarkation for Cythera' by Jean-Antoine Watteau, but guides the viewer further through the Isle of gods, via his paintings. His style is based on the form of Watteau, in a combined style of impasto impressionism, synthetic cubism, and color contrast for energetic communication of focal points. The energy impact of all three styles as non objective art captured Oscar Wilde's "Nature copying Art." (Preface of Dorian Grey), and transfixes and comforts the viewers, through their language with nature, into an imaginative and innovative world of the gods by art.

Altman's work is strong on the physical texture of paint and objects by conforming them to his world. Indeed, a match, as well as, a new approach to the combined worlds of artists styles, like the impressionists : Monet's broken color, Pissarro's pattern of broken color, and Van Gogh's impasto. Altman's images are transformed into patterns of Cubism and High Analytical Cubism of Picasso and George Braque, translating the imaginative form of Watteau's metaphysical world. He has combined what many artists, in the past, used on a singular basis.

The viewer is taken on a tour, of a new metaphysical world, with the comfort of timelessness, and patterns from objects of nature, working together. It is a calm world transformed by metaphysical beauty and created by poets such as John Donne and George Herbert. Altman's aesthetics has join this group of visual and literary artists, on a strong plain on the Isle of Cythera, as your visual guide of human emotions, dancing to the universal rhythms of nature on another dimension."

~ **Yvonne Mikulencak, M.F.A and Retired Art History Professor**

"Trent's expressionistic style and career history have proven him to be not only a very credible but a well respected artist. In the style of abstract expressionism his paintings are quite captivating. His play with colours and shapes makes you linger, makes you wonder. The texture is also captivating with his use of mixed media. I feel like I'm entering Trent's soul each time I immerse myself in one of his works."

Sonia Sugavau (Documentary Filmmaker)

"Trent Altman's paintings are confident and original. Impressive work."

Nicholas Treadwell (owner Treadwell Gallery, Aigen, Austria).

4. Publications: Articles written about Trent Altman and Books Using ArtWork

2013 -- Coffee table book images of Trent's original paintings aside with short stories and poetry written by Jackie Marquette, currently writing chapters for SkyHorse Publishing in NYC.

2013 -- *Art and Independence*. Kentucky Homes and Gardens. pg. 30 - 33. A four-page layout article about Trent and images of his original paintings. September/October 2013, Volume 10 Issue 5.

2012--*Mind Eye Artist*. Two page spread of Trent's painting Abstract Garden II in Autism File Feb-March 2013 Issue 48.

2011, *Autistic, but So Artistic*: Published in the Courier-Journal on May 11 and nationally in the Gannet.

2010, Fall Article--*Recovering Emotional Well-Being through Art Making: for Teens and Young Adults with ASD*, Autism File Magazine, written by Jackie M. Marquette Ph.D.

4. Publications: Articles written about Trent Altman and Books Using ArtWork, cont.

2010, July. Article– *Trent Altman Dazzles Chicago With His Art*. In Chicago Now. Written by Kersten Rojas. A Celebration of Trent Altman: Exceptional Artist with Soul.

2010 Coffee Table Book–*The Art of Autism – shattering seven myths of autism through the voices and art of those on the spectrum*. 148-page full-color book. Trent Altman with over 50 artists. Published by Autism Today.

March 2009, Trents Studio Newsletter, artwork.

Spring 2009, Volume 2, Issue 4, Office of Vocational Rehabilitation Review Employer, Spotlight Presents Meijer's Corporation Demonstrates Unique Flexibility

2005–Burba, P. *The final stretch*. Courier Journal, Friday, April 29, p. 18.

2004–Ritchie, C. *Autistic artist discovered a love of acrylic*. Courier Journal, Friday, September 17, p. 13-14,.

2004–Kentucky Autism Training Center Newsletter.

2004–Disability Business Network Newsletter.

5. Collectors and Permanent Exhibitions: Schools and Libraries & COLLECTORS

Village Green Hills, Nashville, TN

Lucille Caudill Little Fine Arts Library at University of Kentucky, Lexington, KY.

Human Development Institute, University of Kentucky, Lexington, KY.

University of Louisville Autism Center at Kosair Charities, Louisville, KY

Western Kentucky University

Kentucky Arts Council, Frankfort, KY

Cassis Dermatology Aesthetics Center, Louisville, KY

McCarton Foundation NYC

The Beacon Day School, La Palma, CA 90623

St. Peter's Church, Paris, KY

Bradstreet Wellness Center, LLC. Melbourne, FL.

Raphael Kellman, MC., NYC

Physicians in private practice in NYC, Chicago, Melbourne FL., Madison Wisconsin, Lansing MI,

Collectors in Vancouver, Malaysia, Japan, and United Kingdom

Numerous private collectors (Kentucky, Physicians in NYC, Chicago, Madison Wisconsin, Melbourne FL).

6. Solo Art Shows

2014- The Meidinger Tower in Downtown Louisville, Ky, Fourth Street Live. Exhibition in Lobby on Marble Walls, February through May (Derby Festivities).

2013--The Creator's Mind, Reception and Opening, St. Peter's Church, Paris, KY. Exhibition held from October 18 through November 18.

2013, August 24. Solo Art Show at Smalltown Gallery. Louisville, KY.

2007-2013- Art collectors purchase art through word of mouth.

2006. STAR, Fundraiser Garden Party for Systematic Treatment for Autism Related Disorders, University of Louisville, June.

2006. Heine Brothers Coffee Shop, Bardstown Road & Douglas Blvd, Louisville, KY, May.

2005. STAR, Fundraiser Garden Party for Systematic Treatment for Autism Related Disorders, University of Louisville, June.

2006. The Winnery, 10th & Market, Louisville, KY., March.

2005. LionheArt Gallery, Hyatt Regency Hotel, September, 2, 2005, Louisville, KY. Solo art show.

2004. LionheART Gallery, Louisville, KY, Solo art show.

7. Group Art Shows

2013 Sweet Art Gallery Artist Receptions, Naples Florida: November 15, December 13,

January 24, February 21, March 21, April 25.

2014 - upcoming group show In NYC. Altman will be in a group show at the Dr. Temple Grandin and Dr. Rosa C. Martinez "Training The Talent In Individuals With Autism" April 16th - 26, 2014 at the Michael Schimmel Center at Pace University.

2013, April 25th. Exhibit Strokes of Genius 3rd Annual Art Exhibition - GLOBAL. United Nations Building, NYC.

2013 Exhibit: "Shifting Perceptions" Opening Reception ~ Friday April 12th, 5-7 PM. Internationally recognized artists on the Autism Spectrum, *Good Purpose Gallery*. In the Berkshires, Lee, Massachusetts

2013 Group Art Exhibit: "Vanderbilt Kennedy Center: Nashville, TN, April - July

2012. McCarton Foundation. Genius of Autism Event, Group art show at Edison Ballroom, NYC , October.

2012. Strokes of Genius Group Art Show. United Nations Building, NYC, April.

2011. Kentucky Crafted: The Market, Kentucky Fair and Expo Center, Louisville, KY Booth #417, South Wing, March, 17 – 20.

2010. Art Avenue—Fund raiser for Kosair Children's Hospital, June.

2009. Art Avenue—Fund raiser for Kosair Children's Hospital, June.

7. Group Art Shows, cont.

2009. Art Avenue—Fund raiser for Kosair Children's Hospital, September.

2009. APW Gallery Presents World of Imagination, Vol. 2, Long Island, NY., March 6 – 29.

2009. Kentucky Center for the Arts, Louisville, original painting "Colors of Life", Arts & Crafts exhibition, February 2-March 6, sponsored by the Kentucky Arts Council and Kentucky Crafted, Louisville, KY

2009. Art exhibit, original painting "My Masterpiece", Louisville Library, Main Branch, 301 York St, Louisville, KY December 18, 2008 thru February 8th, 2009 sponsored thru the Mellwood Arts & Entertainment Center, Louisville, KY

2008. Mega Art and Music party/exhibit. Artists, Cindy Lowy Fess, Michael Fess and Trent Altman, 11100 Indian Legends Drive, Louisville, KY 40241, November 15.

2007, The Kentucky Center, Art Exhibit, "The Dragon", 5th & Main St., Louisville, KY., Show continues from January 20 through March 30.

2007. Kentucky Crafted: The Market, Kentucky Fair and Expo Center, Louisville, KY Booth #417, South Wing, March, 1 – 4.

2006. Governor's Breakfast, Frankfort, KY., Derby Day, May 6.

2006. Kentucky Center for the Arts, Art Exhibit & Reception, Louisville, KY, reception March 3; Shows through April 3.

2006. Expressions of True Colors, Art Show, The Winnery, 10th & Market, Louisville, KY., Group show-sold six paintings and over 100 wine bottles with art image on label, March 2006.

2006. Expression of True Colors-Art Show, artists' reception: March 11.

2006. The River Bend Winnery, 10th & Market, Louisville, KY. Group show Kentucky Crafted: The Market, Kentucky Fair and Expo Center, Louisville, KY, Booth #427, South Wing, March 3-5.

2005 Bourbon Ball Fundraiser, Louisville, KY., October 7. Breath of God, 40 x 30, Giclee Print Sold. Group exhibit.

2005 Inspire Art Gallery, Chicago, IL, September 8 thru October 3, 2005 Group show.

2005. Expressions of True Colors, Art Show, The Winnery, 10th & Market, Louisville, KY., Group show-sold six paintings and over 100 wine bottles with art image on label.

2004. Oscar Brown Art Gallery, Market St., Louisville, KY.. Group show.

2004. Courier Journal Art Opening, City Café, Louisville, KY., 2004. Group show.

2004. Bandy-Carroll-Hellige Public Relations, VSA two-man show, Louisville, KY..

2004. Mellwood Arts and Entertainment Center, Creative Diversity, FAT Gallery Hop, 2004-2010.

8. Juried Fine Art Fairs

ANCA International Naturally Autistic People's Award and Festival Exhibition, October 2, 3, 4, 2013 in British Columbia.

Art in the Arbor, Thomas Jefferson Unitarian Church, May 2012

St. James Art Show, West End Baptist Church, Louisville, KY., 2011

Art in the Arbor, Thomas Jefferson Unitarian Church, May 2011

Holiday Fair, Thomas Jefferson Unitarian Church, December, 2010

Cherokee Triangle Art Fair, Louisville, KY., April 2010

Chatauqua Art Fair, Madison, IN., 2009

Cherokee Triangle Art Fair, Louisville, KY., April 2009

Art in the Arbor, Holiday Fair, Thomas Jefferson Unitarian Church, May 2009

Chatauqua Art Fair, Madison, IN., 2008

Crocker Park, Cleveland OH, 2008

Art in the Arbor, Thomas Jefferson Unitarian Church, May 2008

Holiday Fair, Thomas Jefferson Unitarian Church, December, 2007

Arts in the Park, Marietta, Georgia, 2007

Chatauqua Art Fair, Madison, IN., 2007

Art in the Arbor, Thomas Jefferson Unitarian Church, May 2007

Holiday Fair, Thomas Jefferson Unitarian Church, December, 2006

Cherokee Triangle Art Fair, Louisville, KY., April 2006

St. James Art Show, Louisville, KY., 2006

Chatauqua Art Fair, Madison, IN., 2006

Art in the Arbor, Thomas Jefferson Unitarian Church, May 2006

Winter Fair, Thomas Jefferson Unitarian Church, Louisville, KY., December 2005.

St. James Art Fair, 4th Street, Louisville, KY., October 2005.

Art in the Park, Nashville, TN., September 2005.

8. Juried Fine Art Fairs, cont.

Art in the Arbor, Thomas Jefferson Unitarian Church, May 2005

Cherokee Triangle Art Fair, Louisville, KY., April 2005

St. James Art Fair, 4th Street, Louisville, KY., October 2004.

Ursuline Campus Art Fair, Louisville, KY., September 2004.

Keeneland Art Fair, Lexington, KY., November 2004.

Winter Fair, Thomas Jefferson Unitarian Church, Louisville, KY., December 2004.

The Belknap Art Fair, Louisville, KY., October 2004.

Arts in the Arbor Art Fair, Louisville, KY, May 2004.

Woodland Art Fair, Lexington, KY., August 2004.

Winter Fair, Thomas Jefferson Unitarian Church. Louisville, KY., 2003.

The Belknap Art Fair, Louisville, KY., 2003.

9. Collaborative Art Projects with Musician Michael Fess and Other You Tube Videos

The Stunning Art of Trent Altman I: You Tube DVD

The Stunning Art of Trent Altman II: An Artful Music Meditation DVD

You Tube Video: The Stunning Art of Trent Altman, 7997 views. http://www.youtube.com/watch?v=wGWm2_JWyfY

You Tube Short Video: <http://www.youtube.com/watch?v=3EUyFCswsAw>

You Tube: Watch Trent Altman Paint: <http://www.youtube.com/watch?v=-XyPM02ltel>

You Tube: <http://www.youtube.com/watch?v=KZk89sWBJLI>

10) Galleries

SCHMIDLIN STUDIO & GALLERY - 2014 -

Gallery One, Nashville, TN, 2014, 2014 -

Windows at the Water, Sechelt, British Columbia. 2013 - present

SweetArt Gallery, Naples, Florida 2013 - present

Gallery 10 Seventy, Mellwood Arts and Entertainment Center, Louisville, KY, Cooperative Art Gallery, 2008-2009

10) Galleries, cont.

Kentucky Artisan Center at Berea, Berea, KY, 2004-present

Natural Selection Gifts, Nashville, TN. 2005

LionheART Gallery, Louisville, KY, 2004-2008.

Taste of Kentucky, Mall St. Matthews, Louisville, KY. 2004-2006.

Headhouse Antiques, Middletown, KY. 2004 – 2007.

Zark's Fine Design Gallery, Eureka Springs, Arkansas, 2004-2008.

Jasper Wall Studio, Dayton, OH, 2004-2007.

11. Other Exhibits

Barnes & Noble Booksellers exhibit, Paul Dorrel's book signing, author of Living the Artists Life, June 10, 2005

Abbey Press, Spring Catalogue, 2005.